

# Overview

For this assignment you will play the role of art curator and create your own, themed art gallery exhibition in Google Art Project.

There are two parts to this assignment.

**Part 1 (due Wednesday, Week 3):** Create and submit your gallery theme for instructor approval.

**Part 2 (due Wednesday, Week 4):** Create and submit your gallery.

## **PART 1: CREATE A THEME FOR YOUR GALLERY (DUE WEDNESDAY, WEEK 3)**

**1. Create a theme for your gallery and submit the theme for approval by Wednesday of week 3.**

For specific instructions on how to create a theme for your gallery assignment, carefully review the week 3 activity titled *ASSIGNMENT Part 1: Google Art Gallery, Create a Theme*. Submit your theme for instructor approval by Wednesday of week 3.

## **PART 2: CREATE AND SUBMIT YOUR GALLERY (DUE WEDNESDAY, WEEK 4)**

**1. Sign in** on [www.googleartproject.com](http://www.googleartproject.com) by clicking the sign in button at the upper right corner of the page. If you already have a Google account, you may use that to log in. If not, create an account so you are able to log in to the site. Once logged in, you can create a gallery with any artwork chosen from the Google Art Project site.

**2. Begin searching for artworks for your gallery that reflect your theme.** Before you can create a new gallery on the Google Art Project platform, you need to save at least one image you mean to include.

To save artwork to later add to your gallery, login and browse the artworks on the Google Art Project site using the search bar on the top right (click to expand as in the below image). You can also browse using the search categories in the drop down menu at the top left. As you look through the art on the site, think about your theme. Try various search terms that relate to your theme. When you find an artwork you would like to include, click on it, then click the heart icon at the

upper right, and the work will be added to your favorites. You will need 10 images in your gallery.

Below image: Search

1,300 items



Below image: Favorite



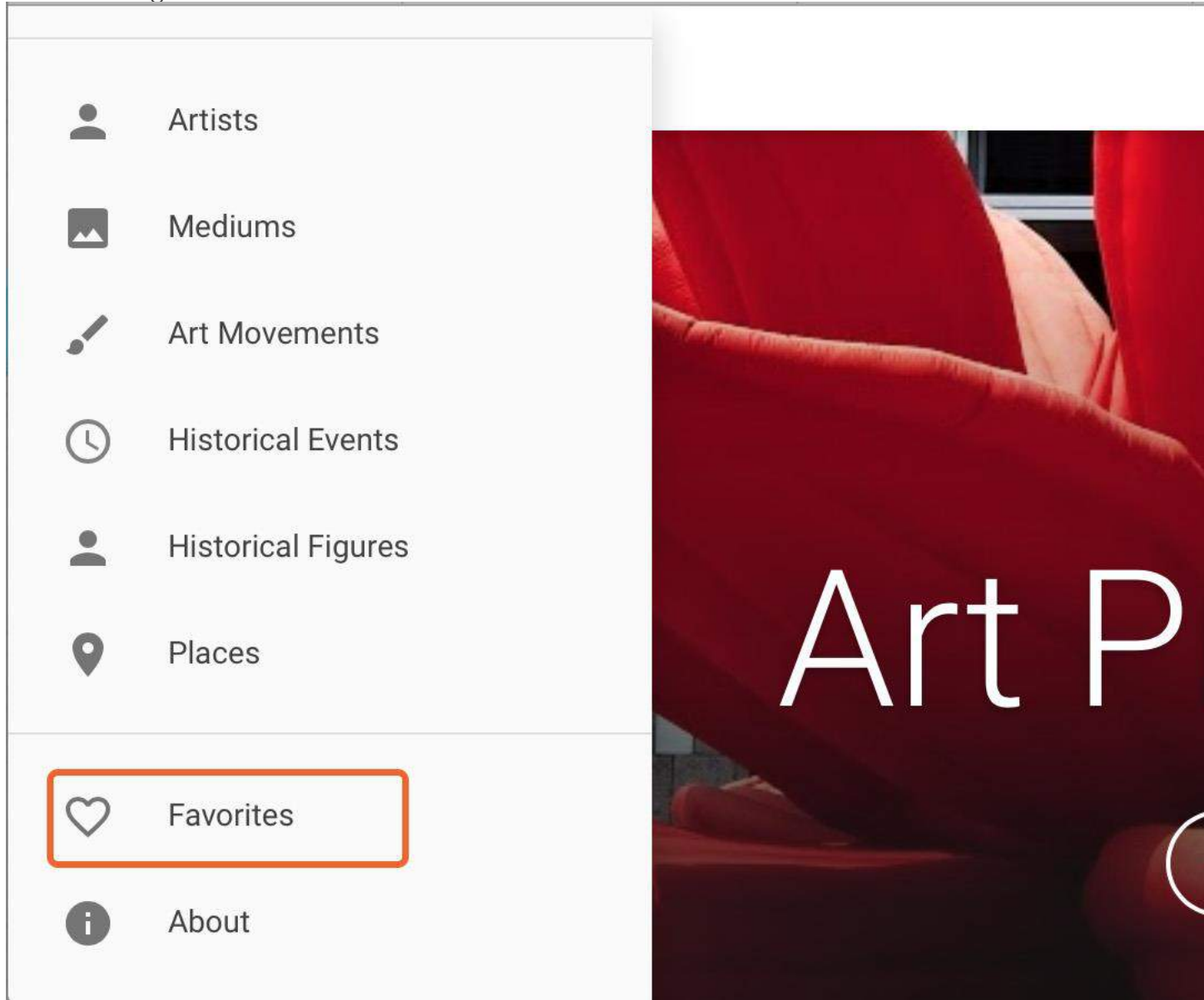
The Birth of Venus

**3. Create a new gallery.** To create a new gallery and start adding images you favorited, click the menu icon at the top left (three lines button), then choose “Favorites.” On the favorites page click “Create New Gallery.” Click

the works from your favorites you want to add into your new gallery. Once **you have checked off artworks to add, then click “Next” at the top right.**

Note: You can remove and add artworks after this step!

Below image: Favorites



Below image: Create Gallery

## Collections



### Create a new collection

Select the items to you would like to include from your list of favorites.



The Fairst of Them All  
Public (read-only)

**4. Add a title based on your theme and include a 50 word description explaining your theme in the “Add Description” box below the title. Include your name in the title box as well. When finished typing **CLICK SAVE**.** The description should state your theme and explain the parameters of your theme in clear, straightforward terms. The description is where you will outline the various narrowing elements of your theme as decided upon in Part 1 of the assignment. Be careful with your wording, the images you choose should directly reflect the theme as outlined in your theme description.

For example:

Title: *Renaissance Venus: The Fairest of Them All - (Your Name)*

Description (explaining the theme): This gallery includes representations of the Roman goddess, Venus, in Renaissance paintings. Images included are from the time period of 1450-1550. Venus was the ancient Roman goddess of love, beauty, sex, fertility, and victory. Despite being a pagan god, she was a popular subject in Renaissance Art.

Don't forget to **click SAVE** after entering your title and description.

Below image: Title, Description, Save





## Renaissance Venus: The Fairest of Them All - (Your Name)

This gallery includes representations of the Roman goddess, Venus, in F  
1550. Venus was the ancient Roman goddess of love, beauty, sex, fertili  
Renaissance Art.



Public



**5. Add 10 works to your gallery.** If you did not add 10 works to your gallery upon initial creation of the gallery you can add and remove works once the gallery has been created.

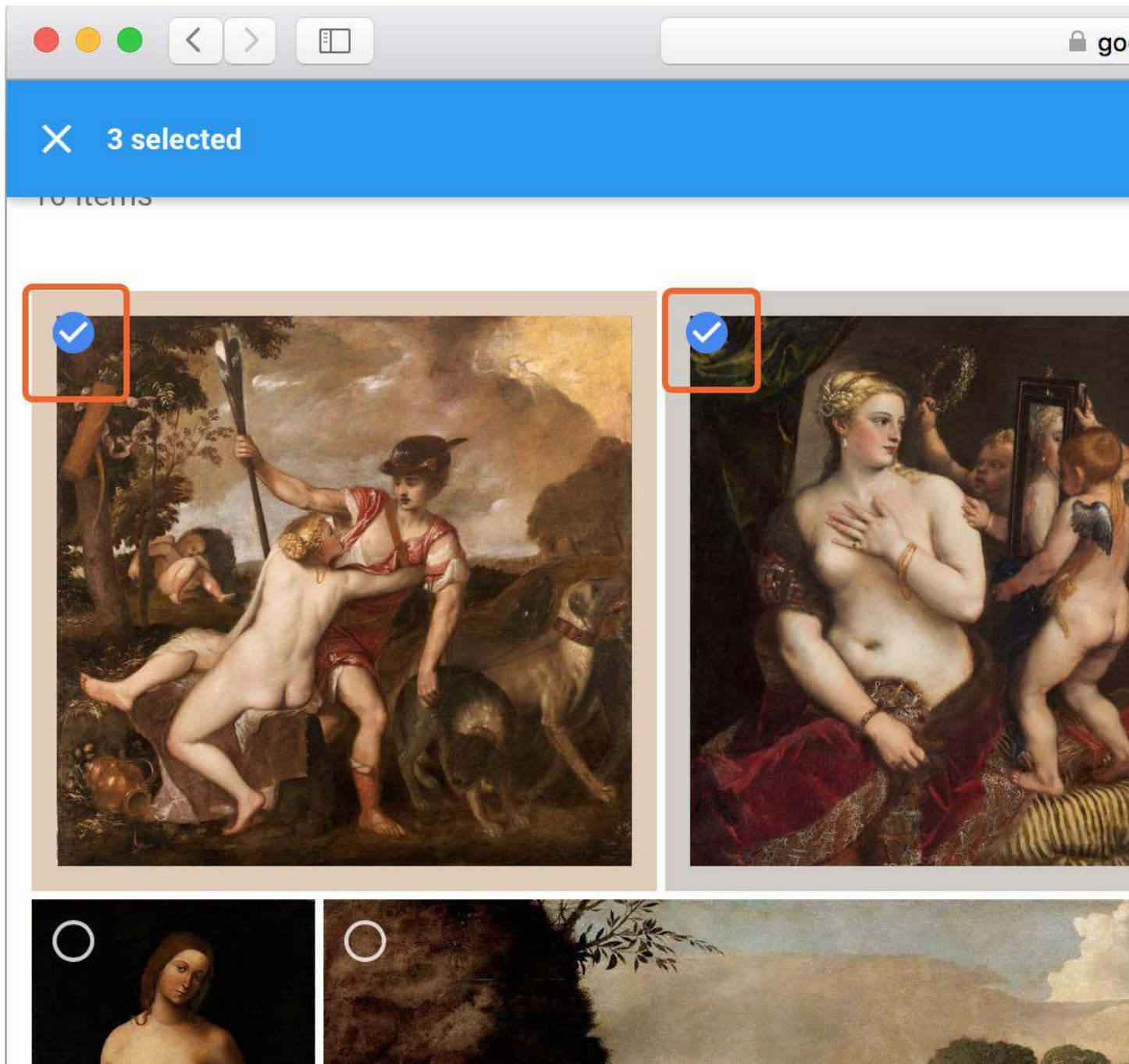
**To add artworks:** Add any further artworks you wish to include to your favorites (see step 2). Go to your favorites and scroll down to the section that is titled “All.” Click the works you wish to add to the gallery. Then click the “+” button at the upper right, and choose the gallery to which you would like to add the images.

**To remove artworks:** Go to your gallery collection. Click the pencil icon below the description text. Click on the images you would like to remove. Then click “Save” in the upper right hand corner.

If you wish for the images to be in a particular order, you will need to add them to your gallery in the order you wish them to appear.

Below image: Adding images after gallery creation.





**6. In a separate word document, for each artwork write at least 50 words covering the following:**

- 1 Use the formal elements and principles of design terms to discuss specific visual elements in each image, outlining how the artwork visually reflects your theme.

Number your images based on the order they appear in your gallery from left to right and **include the title and artist** of each artwork next to the

number. Then, write out the individual image comment in the word document. This word document will be submitted along with your gallery link after you complete the remaining steps.

Comments should be written in your own words, but your discussion of each artwork should be objective. Focus on the important visual elements, rather than personal interpretations or feelings.

Using sources outside of Google Art Project is not required or encouraged.

Do not copy text from Google Art Project descriptions. If you do feel the need to do outside research, please include your sources in your word document submission in APA style.

Word document example.

yourname\_googlegalleryproject.docx

Normal Calibri (Hea... 12 B I U

Home Layout Document Elements Tables Charts SmartArt

Renaissance Venus: The Fairest of Them All - (Your Name)

Link: <https://www.google.com/culturalinstitute/beta/favorite/group/xAJyG21>

Image Comments:

1. *Venus and Adonis*, Titian  
This artwork shows high movement. Venus twists to grab the torso of Adonis. The right foot of Adonis is pushed forward, implying that he is moving to the right to escape the grasp of Venus. The nude back of Venus becomes the focal point of the image. Against the muted tones of the background, the large back of Venus is white and placed at the center of the composition.
2. *Venus with a Mirror*, Titian  
Venus is placed at the center of the composition and is the clear focal point of this image. The dark colors of the background help to make the white skin of Venus stand out. She is also placed at the center of the work. Her face is reflected in the hand mirror held up by Cupid, further emphasizing that Venus, and her beauty, are the main subject of this artwork.
- 3.

7. When you have a title, description, and 10 artworks **change your gallery from “private” to “public.”** Click on your gallery on your “Favorites” page. Click the pencil button below the description. At the left, change the gallery from “Private” to “Public” by clicking the button. Click **SAVE.**

Below image: Change to Public, Save



## Renaissance Venus: The Fairest of Them All - (Your Name)

---

This gallery includes representations of the Roman goddess, Venus, in R  
1550. Venus was the ancient Roman goddess of love, beauty, sex, fertilit  
Renaissance Art.

---



8. Once the gallery has been changed to public and you have clicked **SAVE**, **copy your gallery URL from your public gallery page.**



# Renaissance Venus: T

## (You

This gallery includes representations of the Roman goddess Venus during the time period of 1450-1550. Venus was the ancient Roman goddess of love and beauty. Being a pagan god, she was



**SUBMISSION: TWO PARTS**



**9. Submit the MS Word document** with your individual image comments. Include your name, the exact title of your gallery and the link to your public gallery.

**10. Post the title of your gallery and the public link to your gallery on the week 4 discussion board** titled “DISCUSSION: Virtual Gallery Peer Review”.

**Test your link before submitting!** Sign out of your Google account and click the gallery link you will be submitting. If your link leads to your gallery when you are logged out of your Google account, you have submitted a working link that can be viewed for grading and peer reviewed. If your link does not lead to your gallery when you are logged out of your Google account, see steps 7-8 to ensure your settings are correct and you are copying your gallery link from the correct screen.

Please review the grading rubric located in the Downloads section.  
Link to example gallery:

<https://www.google.com/culturalinstitute/beta/favorite/group/xAJyG21fLqKS Lg>