

ARCH 232, 2017, Quiz 3

Please have an empty seat on either side of you. The last row is **REQUIRED** to remain empty. Find a seat elsewhere. During the quiz all materials will be packed away (except for a writing instrument).

You may begin the test as soon as you receive it.

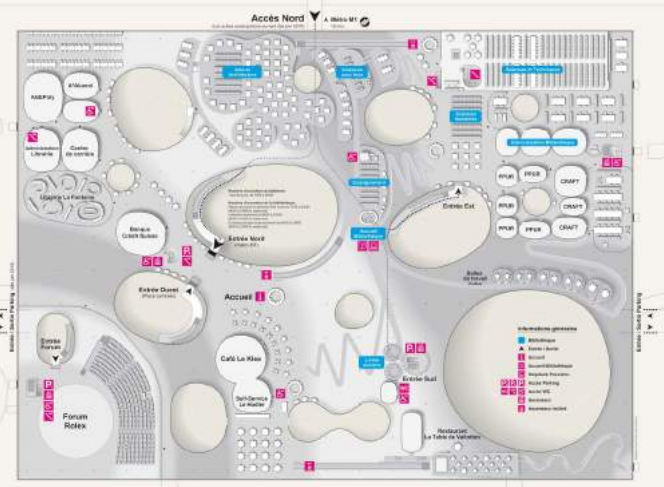
Extra credit slide 1 will be up from 10-10:10.

Extra credit slide 2 will be up from 10:10-10:20.

Quizzes are **REQUIRED** to be turned in by 10:40.

Only write on the sheets provided (if you need more paper, raise a hand and we will give you more paper). We will **only** grade sheets that have your name on them (so please write your name on **EVERY** piece of paper)

You are REQUIRED to fill in your BUILDING GROUP sheet WITH ALL MEMBERS before 11:20 prior to leaving.



Extra Credit # 1—Identify ONLY ONE project in the ID section; but refer to both in the short answer portion.

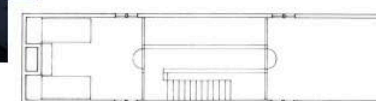




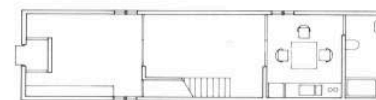
interior courtyard

<https://studiomacchidon.com/files.wordpress.com/2011/02/ind-cour.jpg>

first floor plan



second floor plan



<http://3.bp.blogspot.com/OBpu42BRU/G0T5Ap7d/AAAAAAAAACw/2058F7wkw/s2000/planta.jpg>



<http://www.melalim.com/wordpress/wp-content/uploads/2014/10/Row-House-04.jpg>

Extra Credit # 2—Identify ONLY ONE project in the ID section; but refer to both in the short answer portion.



<http://www.szah.net.com/resources/exterior/Images/Tw-moma-0506.jpg>



https://farm7.staticflickr.com/6183/6075209696_0e4430e2ff_b.jpg

